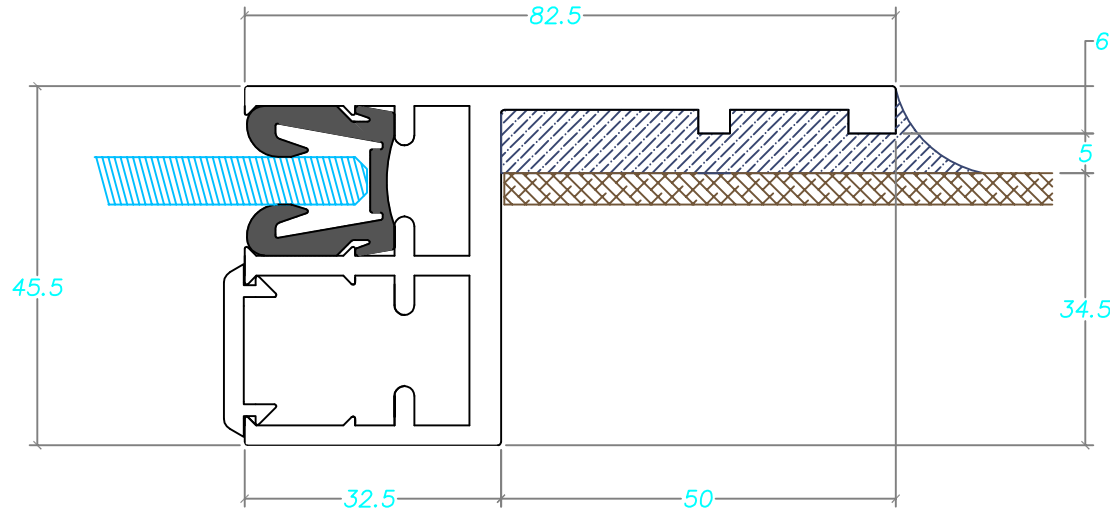


GENERAL DIMENSIONS.

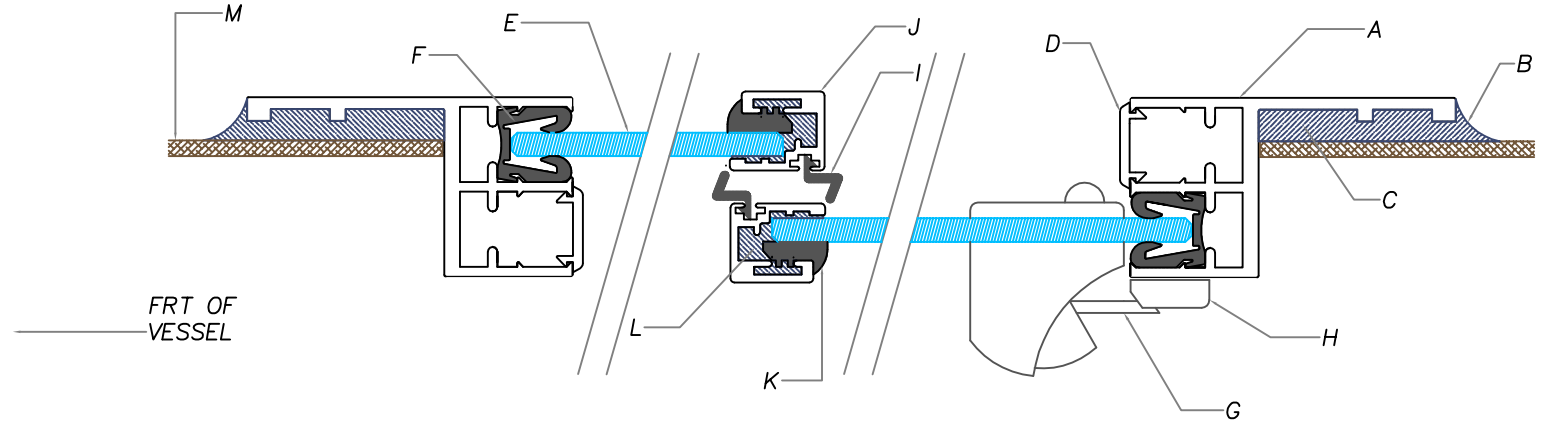
Scale APPRX 1:1 @ A4



A	S2 MAIN FRAME 6060T1 ALUMINIUM
B	NEUTRAL CURE SILICONE 'BACKFILL'
C	265 SIKAFLEX
D	'CAP' INSERTION P.V.C.
E	6 - 12mm TSG (Toughened Safety Glass.)
F	FLOCKED RUBBER TRACK
G	SPRUNG PVC HANDLE (TASKER BRAND.)
H	PVC HANDLE STRIKER
I	'QLON' MEMORY VINYL SEAL
J	OVERLAP ALUMINIUM CAPPING SEAL
K	PVC FIXING WEDGE
L	NEUTRAL CURE SILICONE (GASKET.)
M	BULK HEAD - SHOWN AT 4mm HERE.

'Rear' SLIDING ASSY

Scale APPRX 1:2 @ A4



REV.	AMENDMENT	DRAWN	DATE
A	-	-	-

USE DIMENSIONS - DO NOT SCALE DRAWING
IF IN DOUBT - ASK WINDOWS WEST

Windows West

8 Redemptora Road
Henderson, WA 6166
AUSTRALIA

Phone: +61 8 9437 9277
Fax: +61 8 9437 9080
E-mail: sales@windowswest.com.au

ACN. 070 345 758

COPYRIGHT: THIS DRAWING IS THE EXCLUSIVE PROPERTY OF WINDOWS WEST PTY. LTD.
AND MUST NOT BE REPRODUCED IN WHOLE OR IN PART WITHOUT
PERMISSION IN WRITING.

© 2004. All Rights Reserved.

CLIENT			-		TITLE		S2 SLIDER (D/G)	
PROJECT			WINDOWS WEST STD SPEC SHEET		SUB-TITLE		REAR SLIDING ASSY.	
DRAWN	P.M.	26.11.06	SCALE		DWG No		WW-S2-001	
CHECKED	P.M.	26.11.06	JOB NO.:		Rev:		(Sht. 1 of 1)	
ISSUED	-	-	-		-		0	
SUPERCEDED	-	-	-		-		-	